



# Weekly Flu Surveillance Report

Week 10 - March 3rd - March 9th, 2024

## Disclaimer

Most cases of influenza are not reportable in the state of Texas, thus the data in this report was collected from hospitals, clinics, and schools throughout the region who have agreed to voluntarily submit data.

## Definitions

**ILI:** Influenza-Like Illness. This is an illness that resembles the flu, but has not been confirmed. **Rapid:** These tests are typically done in-house to quickly test for influenza. **PCR:** These tests are generally more precise than rapid tests and are performed at the DSHS state lab and many commercial labs to confirm a case of influenza.

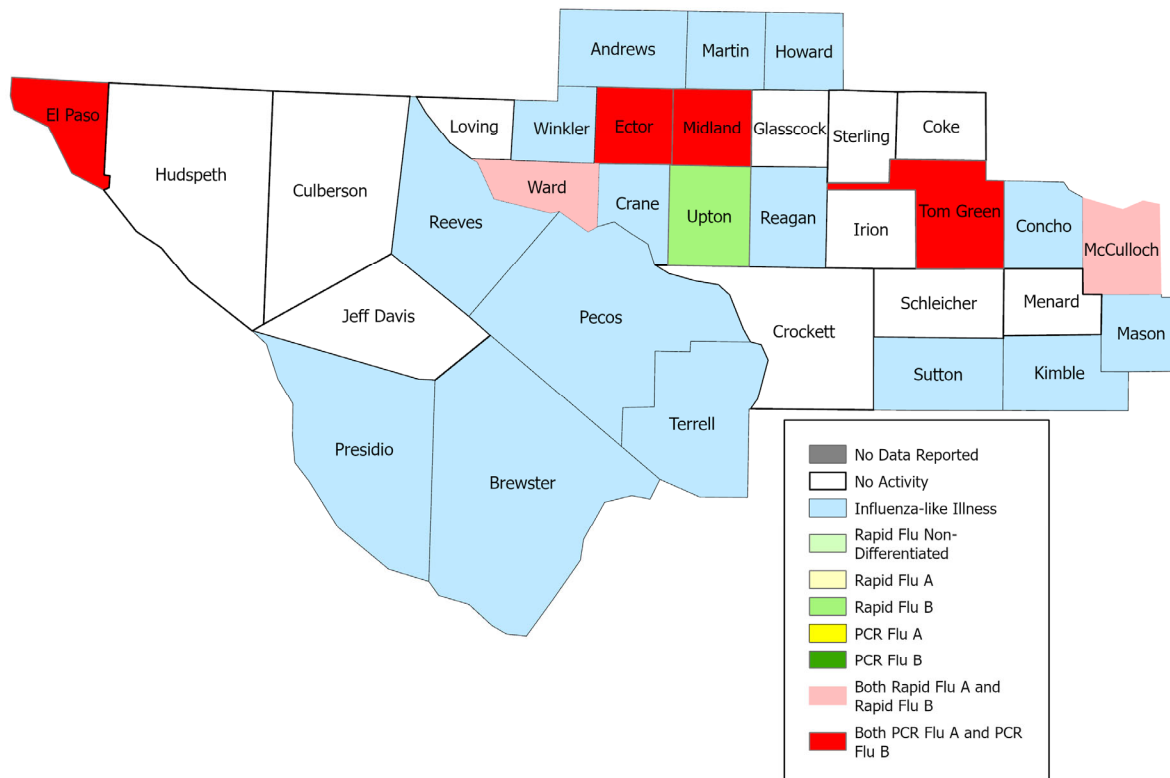
## Summary Data

Condition	Week 10	Week 09	Week 08
Number of Counties Reporting (36 total)	→ 35	35	35
Number of Counties Reporting ILI	↓ 17	22	19
Number of Counties Reporting High Levels of ILI*	↓ 7	10	10
Number of Counties Reporting Flu A	↓ 6	9	10
Number of Counties Reporting Flu B	↓ 7	10	11
Number of Counties Reporting Flu A & Flu B	↓ 6	9	10

The arrows represent changes from the previous week. A sideways arrow means there was no change in that condition.

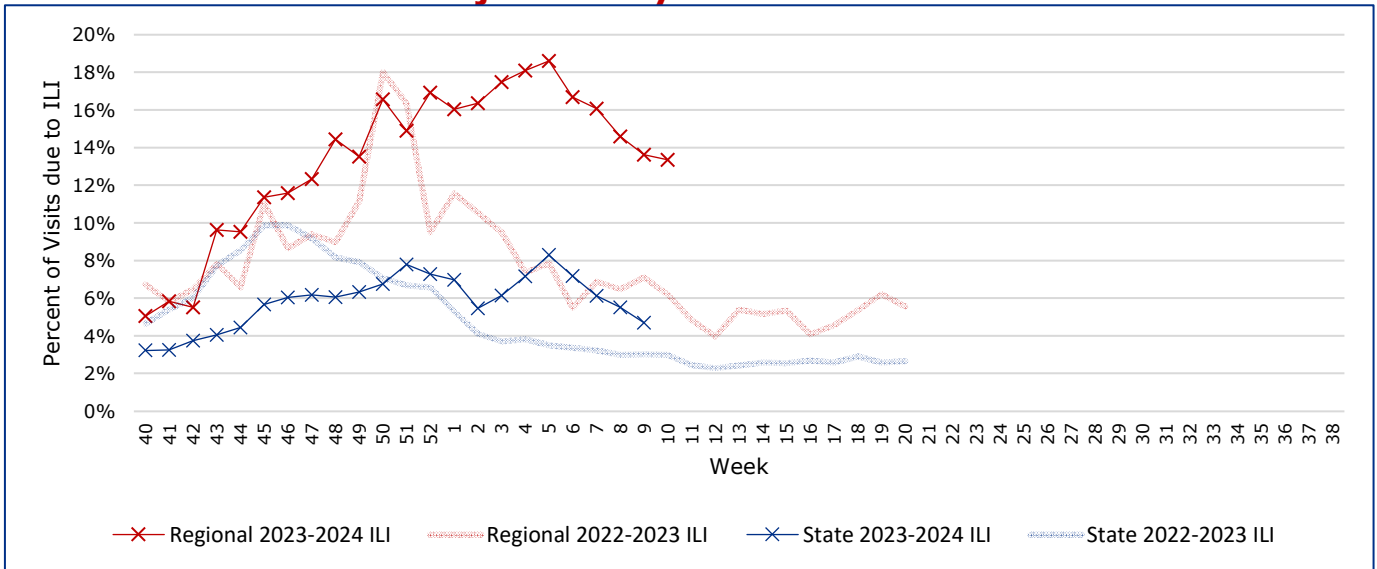
\*Counties with total percent of visits due to ILI above 4.0% for the week are considered to have high/abnormal levels.

## Map of Regional Flu Activity



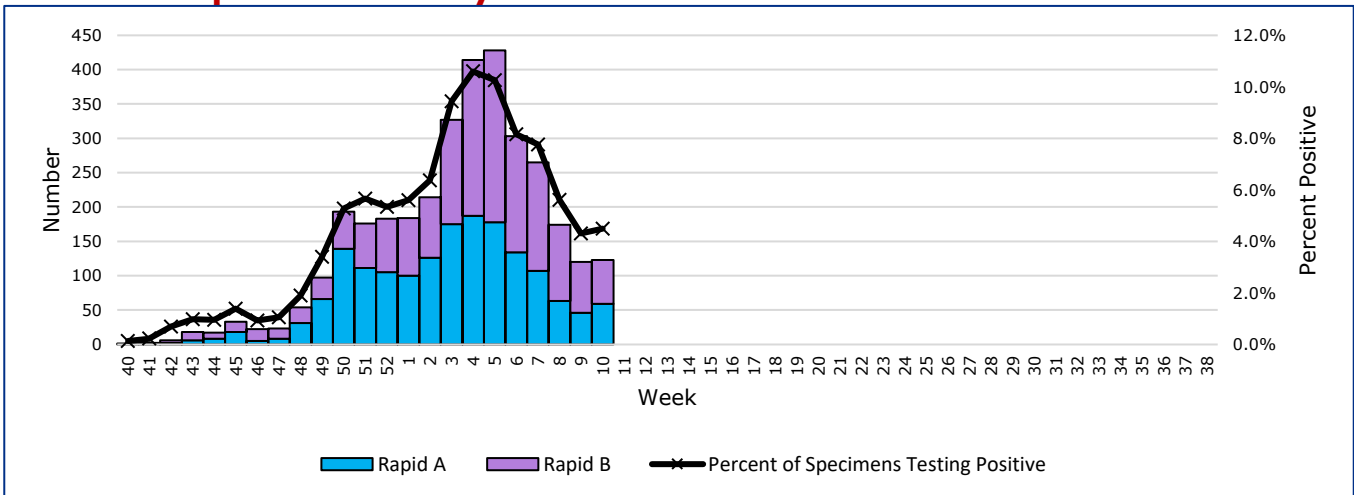
The map above depicts the previous week's reports of flu or influenza-like illness activity in each county. The legend on the bottom right of the map describes the meaning of each color.

## Influenza-Like Illness Projections by Week



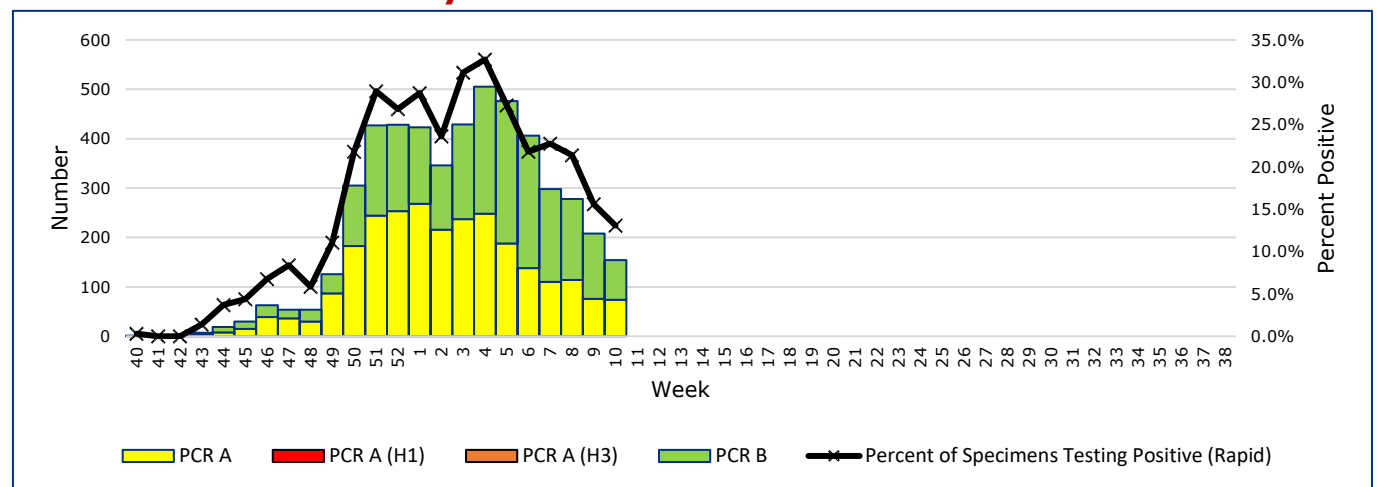
This chart documents the percentage of patient visits that were due to ILI at hospitals and clinics around the region, excluding confirmed COVID cases. It compares our region's data with the state's data and also compares to last flu season.

## Positive Rapid Flu Tests by Week



This chart documents the number of rapid tests that have come back positive for flu A and flu B each week throughout the region.

## Positive PCR Flu Tests by Week



This chart documents the number of PCR tests that have come back positive for flu A and flu B each week throughout the region.

## Flu Data by County

County	Week 10				Week 09				Week 08			
	Patient Visits	% with ILI	Flu A	Flu B	Patient Visits	% with ILI	Flu A	Flu B	Patient Visits	% with ILI	Flu A	Flu B
Andrews	220	0%	0	0	707	13%	4	11	723	17%	8	14
Borden	0		0	0	1	0%	0	0	2	0%	0	0
Brewster	80	0%	0	0	88	0%	0	0	85	0%	0	0
Coke	2	0%	0	0	7	0%	0	0	4	0%	0	0
Concho	22	0%	0	0	15	0%	0	0	25	0%	0	0
Crane	43	0%	0	0	32	0%	0	0	32	0%	0	0
Crockett	15	0%	0	0	15	0%	0	0	17	0%	0	0
Culberson	3	0%	0	0	4	0%	0	0	10	0%	0	0
Dawson	155	0%	0	0	145	0%	0	0	156	0%	0	0
Ector	5816	29%	56	69	5839	31%	44	93	6129	32%	60	129
El Paso	7427	1%	1	12	7415	0%	0	0	7624	0%	0	0
Gaines	150	0%	0	0	134	0%	0	0	141	0%	0	0
Glasscock	6	0%	0	0	13	8%	0	0	27	11%	0	0
Howard	388	0%	0	0	575	3%	2	3	617	5%	0	1
Hudspeth	22	0%	0	0	22	0%	0	0	20	0%	0	0
Irion	2	0%	0	0	1	0%	0	0	1	0%	0	0
Jeff Davis	21	0%	0	0	14	0%	0	0	16	0%	0	0
Kimble	121	1%	0	0	128	5%	0	0	140	6%	1	1
Loving	2	0%	0	0	3	0%	0	0	2	0%	0	0
McCulloch	73	88%	7	3	91	82%	3	8	99	84%	5	6
Martin	50	0%	0	0	233	8%	0	1	193	9%	3	1
Mason	35	0%	0	0	51	0%	0	0	41	0%	0	0
Menard	5	0%	0	0	9	0%	0	0	13	0%	0	0
Midland	2966	16%	31	32	3088	15%	32	41	3156	17%	44	73
Pecos	135	0%	0	0	166	0%	0	0	158	0%	0	0
Presidio	37	0%	0	0	72	6%	0	0	228	7%	0	0
Reagan	22	0%	0	0	25	0%	0	0	20	0%	0	0
Reeves	199	0%	0	0	198	0%	0	0	214	0%	0	0
Schleicher	1	0%	0	0	0		0	0	3	0%	0	0
Sterling	2	0%	0	0	2	0%	0	0	0		0	0
Sutton	21	0%	0	0	19	0%	0	0	14	0%	0	0
Terrell	5	0%	0	0	8	0%	0	0	3	0%	0	0
Tom Green	1390	2%	15	17	1408	2%	15	30	1473	3%	32	27
Upton	144	22%	0	6	120	18%	1	1	151	17%	2	9
Ward	831	42%	23	5	623	39%	11	14	743	42%	10	9
Winkler	90	0%	0	0	417	25%	10	4	443	23%	12	5
<b>Total</b>	<b>20501</b>	<b>13.3%</b>	<b>133</b>	<b>144</b>	<b>21688</b>	<b>13.6%</b>	<b>122</b>	<b>206</b>	<b>22723</b>	<b>14.6%</b>	<b>177</b>	<b>275</b>

## **Flu-Associated Pediatric Deaths & Outbreaks**

No flu-associated pediatric deaths have been reported in PHR 9/10 this flu season. In PHR 9/10, no flu outbreaks have been reported for Week 10.

**For a more comprehensive look at respiratory illnesses circulating throughout Texas, please visit: <https://www.dshs.texas.gov/texas-respiratory-virus-surveillance-report> and select the "Current Texas Respiratory Virus Surveillance Report"**