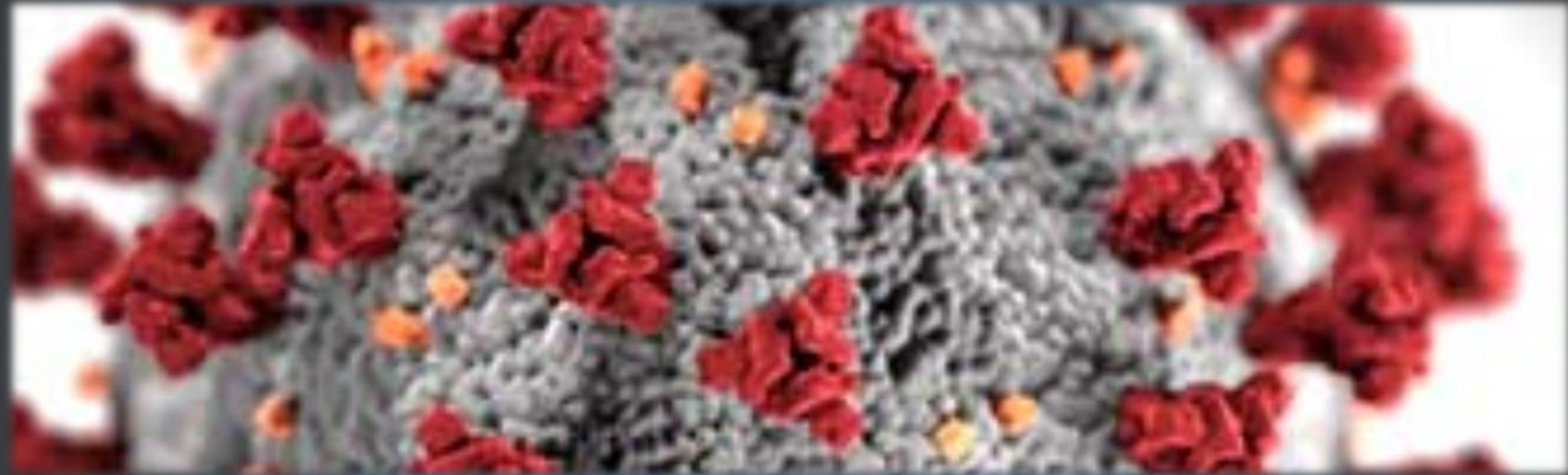




TEXAS
Health and Human
Services

**Texas Department of State
Health Services**

COVID-19 Update



April 13, 2021

John W. Hellerstedt, MD, Commissioner
Texas Department of State Health Services

DSHS Roles during the Pandemic

- Coordinate state and local public health efforts.
- Deploy medical staffing to hospitals, nursing facilities, and other healthcare entities.
- Source and allocate therapeutics, medical supplies, and personal protective equipment.
- Maintain public awareness and knowledge through multi-media platforms.
- Provide guidance for individuals, businesses, and elected leaders.
- Manage lab testing and capacity.
- Collect, analyze, and report data.
- Develop the infrastructure for equitable COVID-19 vaccine distribution.



DSHS Keeping Texans Safe

Year 1 of the COVID-19 Pandemic: January-December 2020



Coronavirus Call Center:

Responded to 32,220 calls and 29,162 emails



Texas Health Trace:

1,598 staff exchanged 1,845,673 calls with COVID-19 positive individuals and their contacts



Coronavirus Website and Social Media:

Website had 37 million views and 300% growth in traffic
1,700 social media posts and 4.7 million engagements



Investigation and Data:

Monitored 60,176 facilities for outbreaks and offered mitigation support



COVID-19 Vaccines:

Distributed ~1.17 million first vaccine doses and 224,250 second vaccine doses

DSHS Supporting the Healthcare Infrastructure

Year 1 of the COVID-19 Pandemic: January-December 2020



Supporting Healthcare Facilities:

Filled 937 STARs for PPE and distributed PPE to all 254 Texas counties



Medical surge staff:

11,396 staff deployed to 291 hospitals, 169 nursing homes, and 4 jails



Durable Medical Equipment:

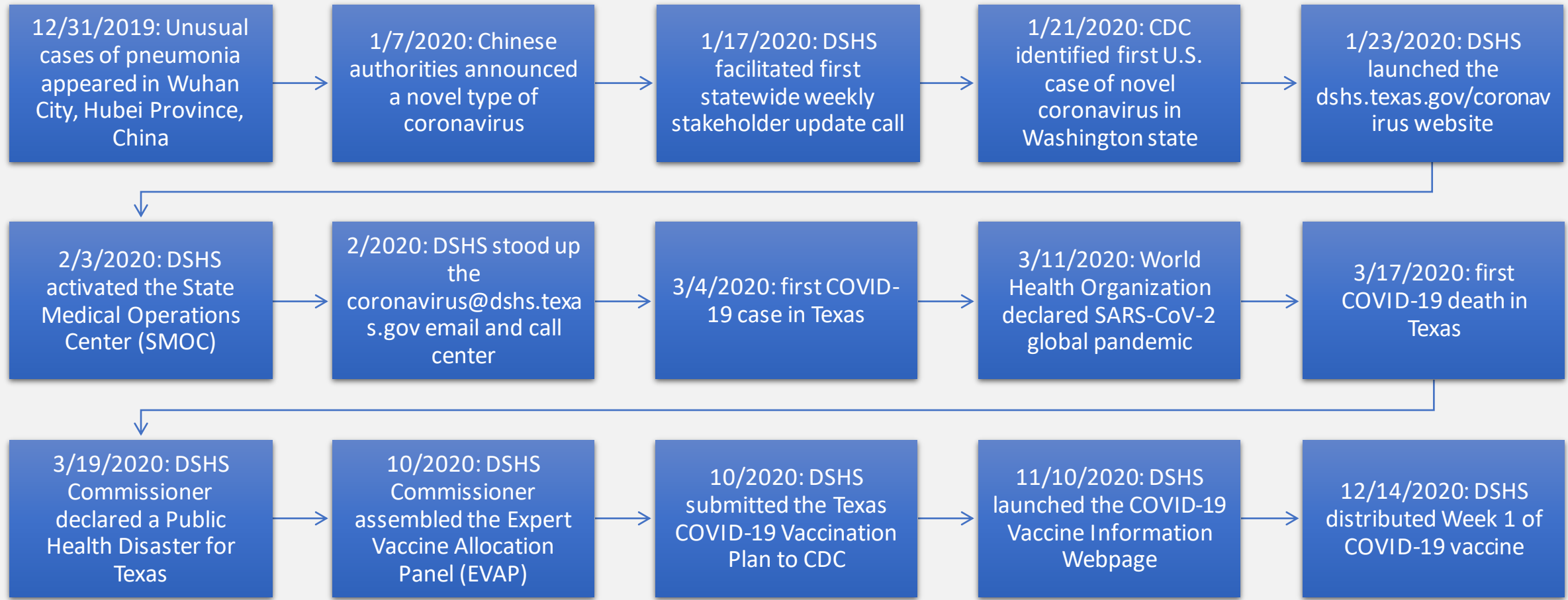
4,924 life-saving pieces of equipment to over 200 facilities



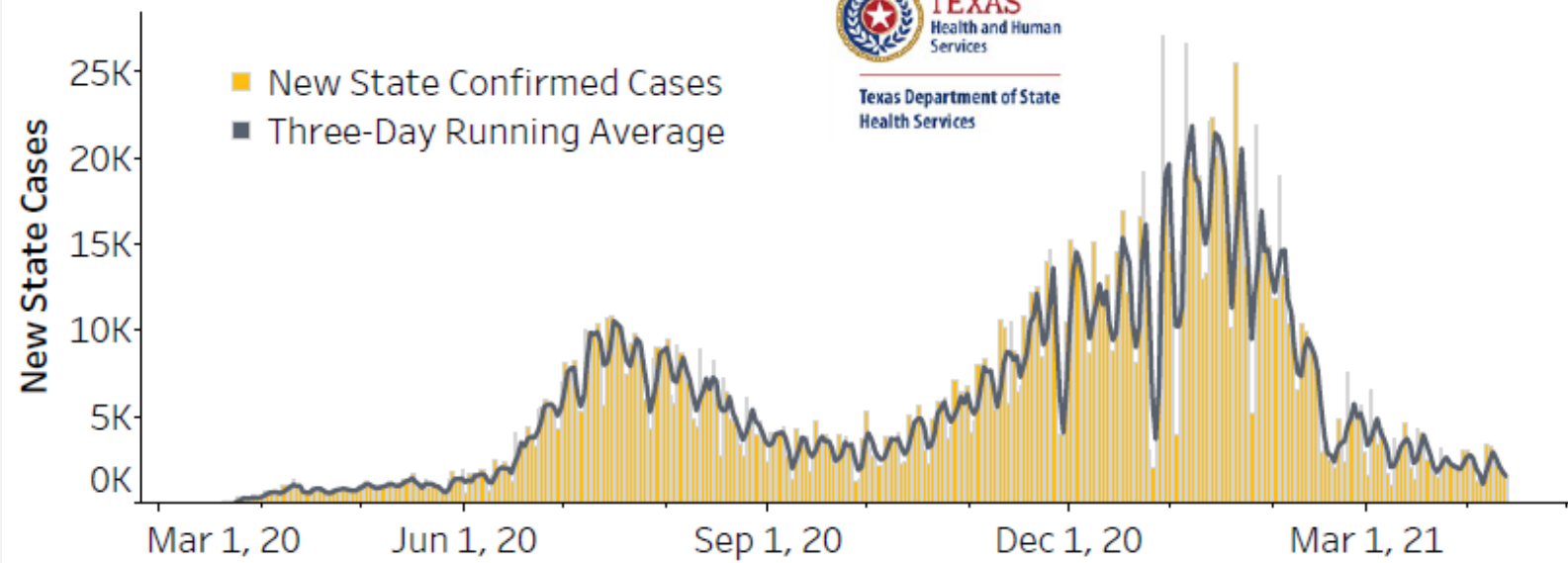
Preserving Hospital Capacity:

Distributed 92,000 treatment courses of remdesivir and 41,000 treatment courses of monoclonal antibodies, supported 15 isolation and quarantine sites, and 17 alternate care sites

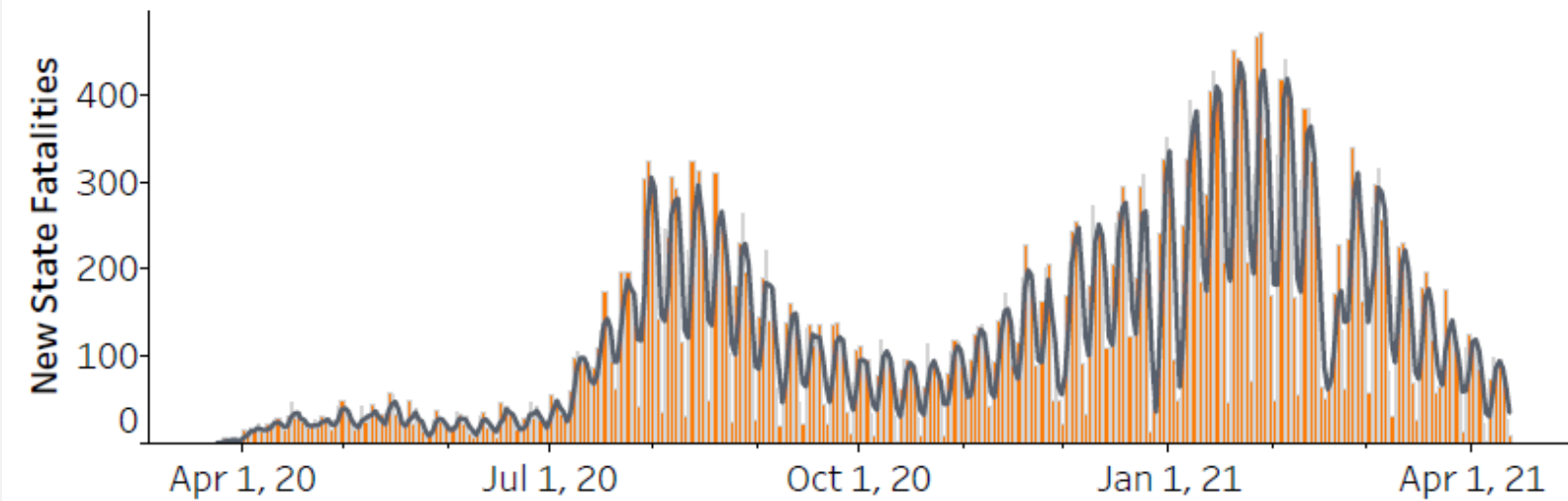
COVID-19 Timeline with DSHS Response Actions



New Confirmed Texas Cases by Day



New Texas Fatalities by Day



These preliminary data are current as of 1:00pm on 4/12/2021.

Note: As of July 27, DSHS is reporting COVID-19 fatality data based on death certificates. The metric used in these charts reports total newly reported fatalities (as opposed to the date of death).

Note: During the week of Feb. 14-Feb. 21, 2021, case and fatality reporting was significantly impacted across the majority of Texas counties due to weather-related issues.



Texas Department of State
Health Services

Hospitalizations Over Time

Total Texas Proportion of Lab-Confirmed COVID-19 Occupancy of General and ICU Beds out of Total Hospital Beds as of:

Sunday, April 11, 2021 Totals

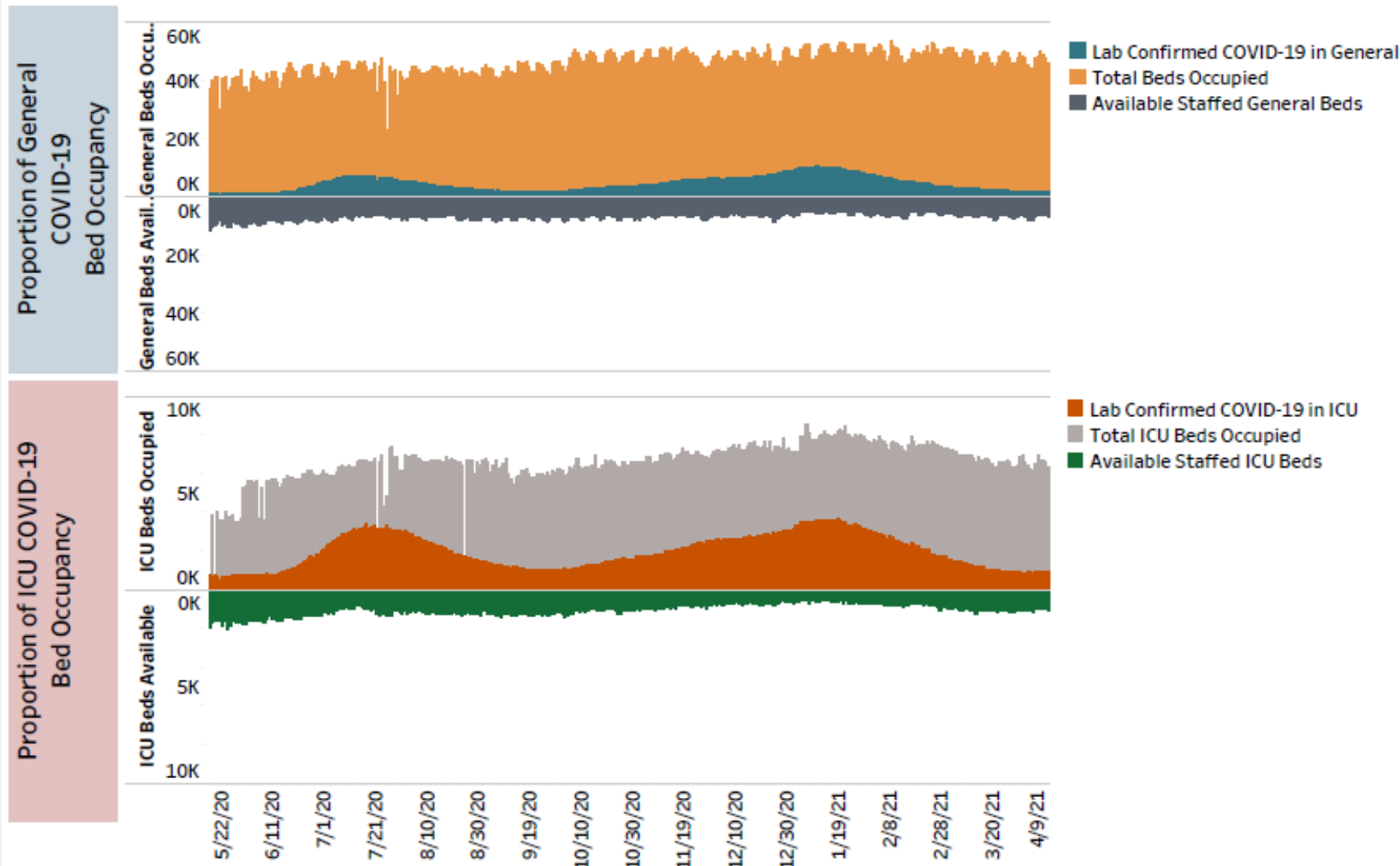
Lab Confirmed COVID-19 in General	1,873
Lab Confirmed COVID-19 in ICU	895
Total Lab Confirmed COVID-19 Gen + ICU	2,768

Notes:

- The most recent hospital data is reported for the day prior.
- After 7/23/2020, DSHS reported incomplete hospitalization numbers due to a transition in reporting to comply with new federal requirements.



Texas Department of State Health Services



These preliminary data are current as of 1:00pm on 4/12/2021.



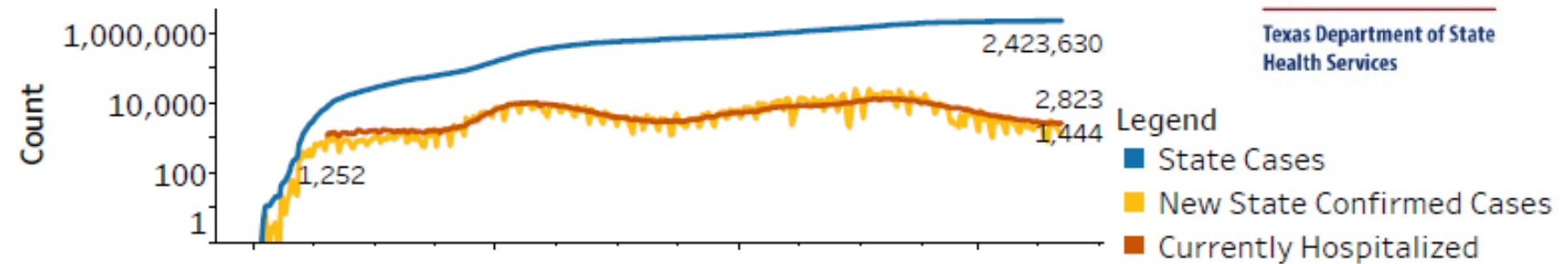
Texas Department of State Health Services

Texas COVID-19 Trends: A Full Picture

Total Texas Covid-19 Confirmed Cases, Confirmed New Cases, and Current Confirmed Hospitalizations



Texas Department of State Health Services

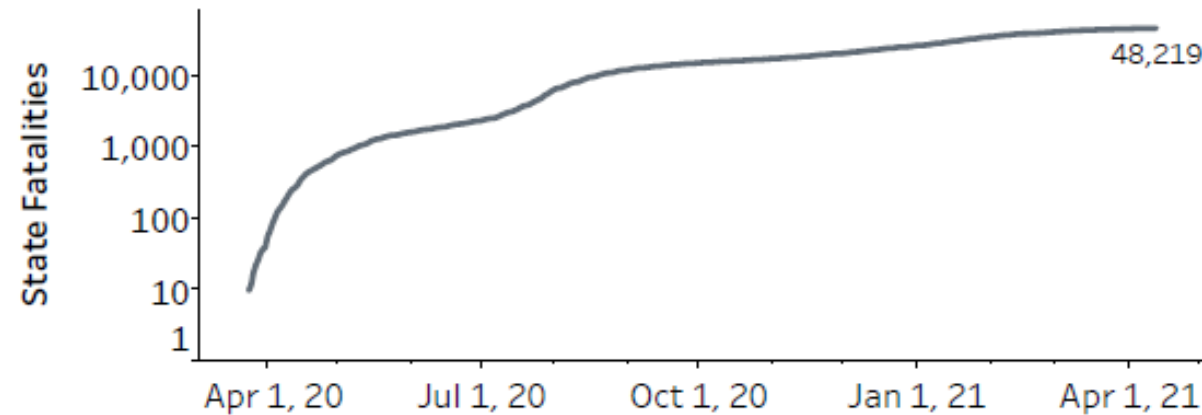


These preliminary data are current as of 1:00pm on 4/12/2021.

Notes:

- After 7/23/2020, DSHS reported incomplete hospitalization numbers due to a transition in reporting to comply with new federal requirements. As of 8/19/2020, 91% of hospitals were reporting.
- During the week of Feb. 14-Feb. 21, 2021, case and fatality reporting was significantly impacted across the majority of Texas counties due to weather-related issues.

Total Texas Covid-19 Fatalities



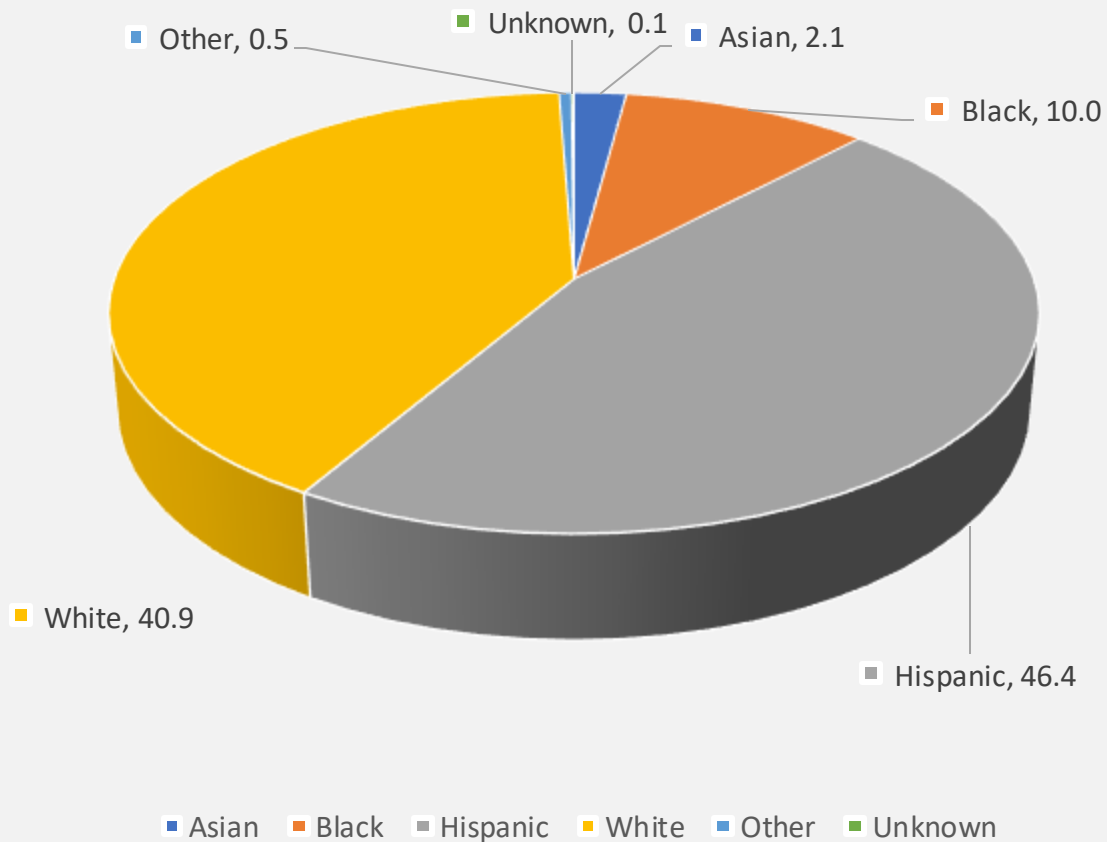
Note: As of July 27, 2020, DSHS is reporting COVID-19 fatality data based on death certificates. The metric used in these charts reports total newly reported fatalities (as opposed to the date of death).



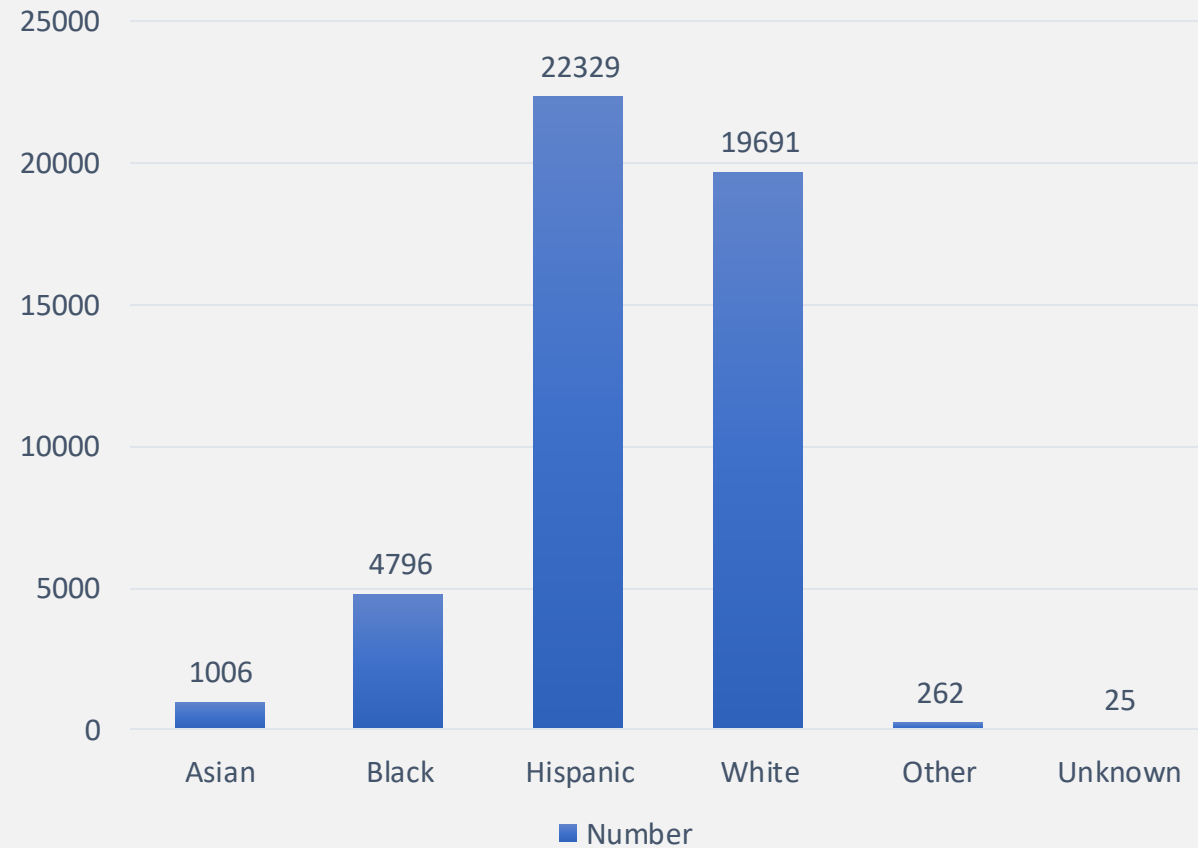
Texas Department of State Health Services

COVID-19 Fatalities by Race/Ethnicity

Fatalities by Race/Ethnicity as Percentage



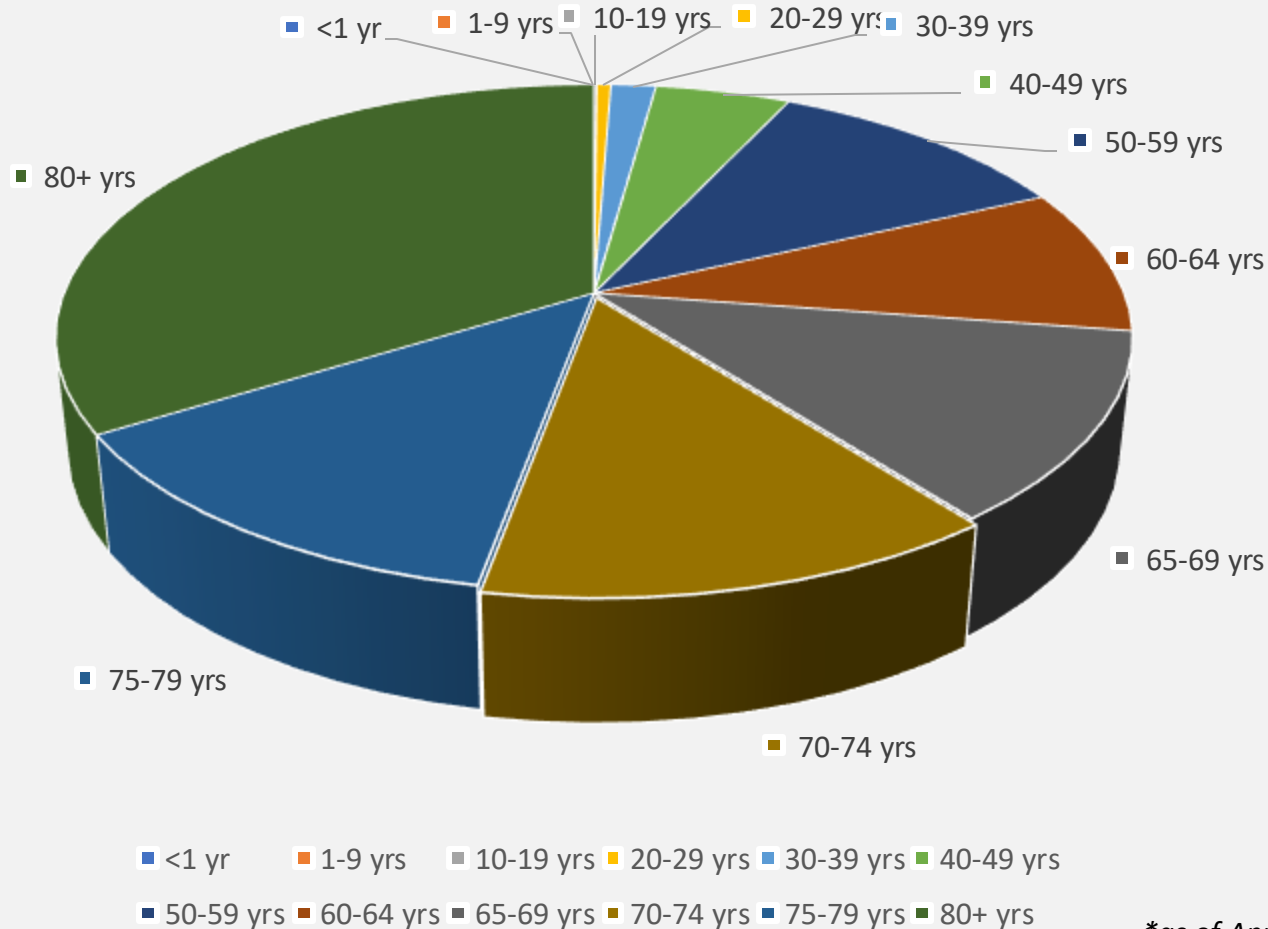
Fatalities by Race/Ethnicity (N=48,109)



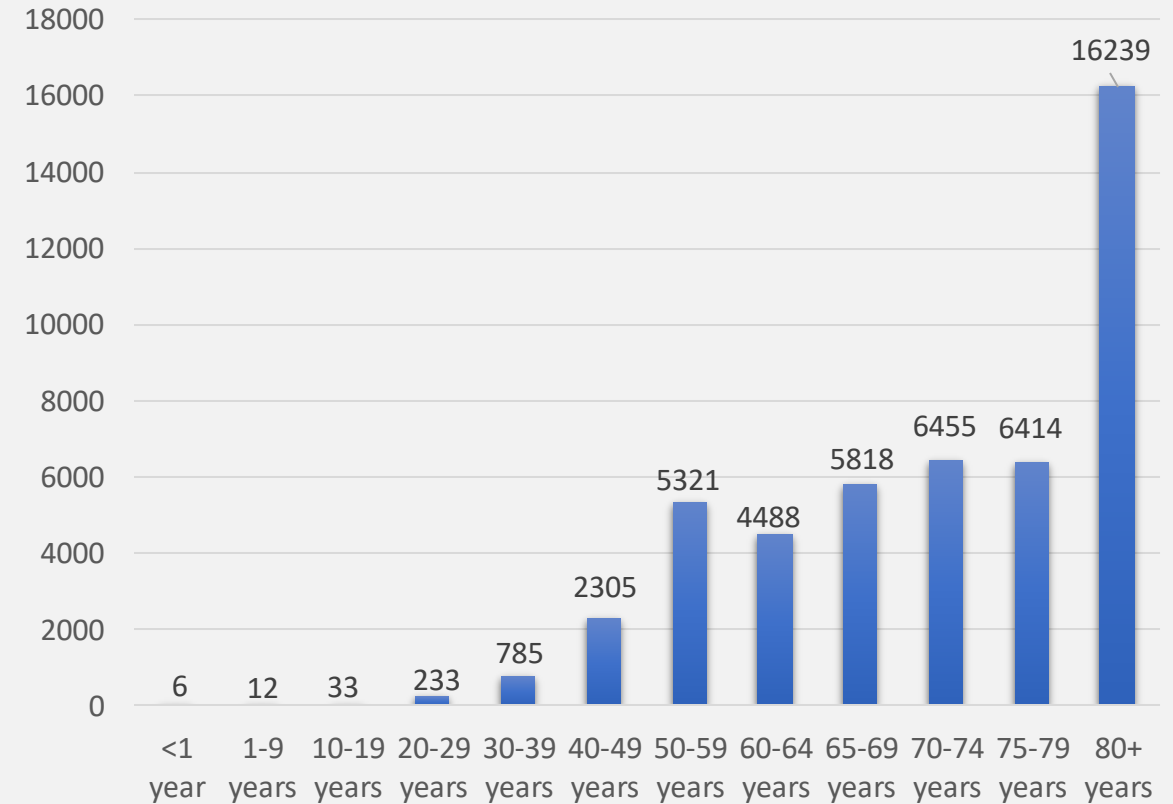
**as of April 9, 2021*

COVID-19 Fatalities by Age

Fatalities by Age Group as a Percentage



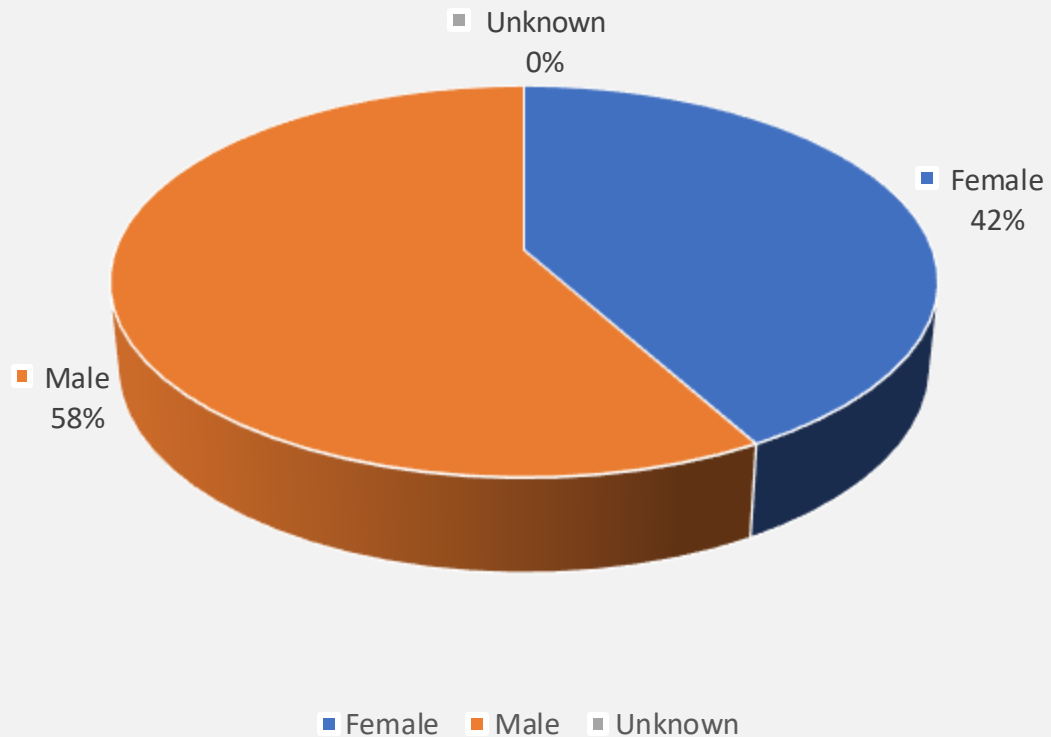
Fatalities by Age (N=48,109)



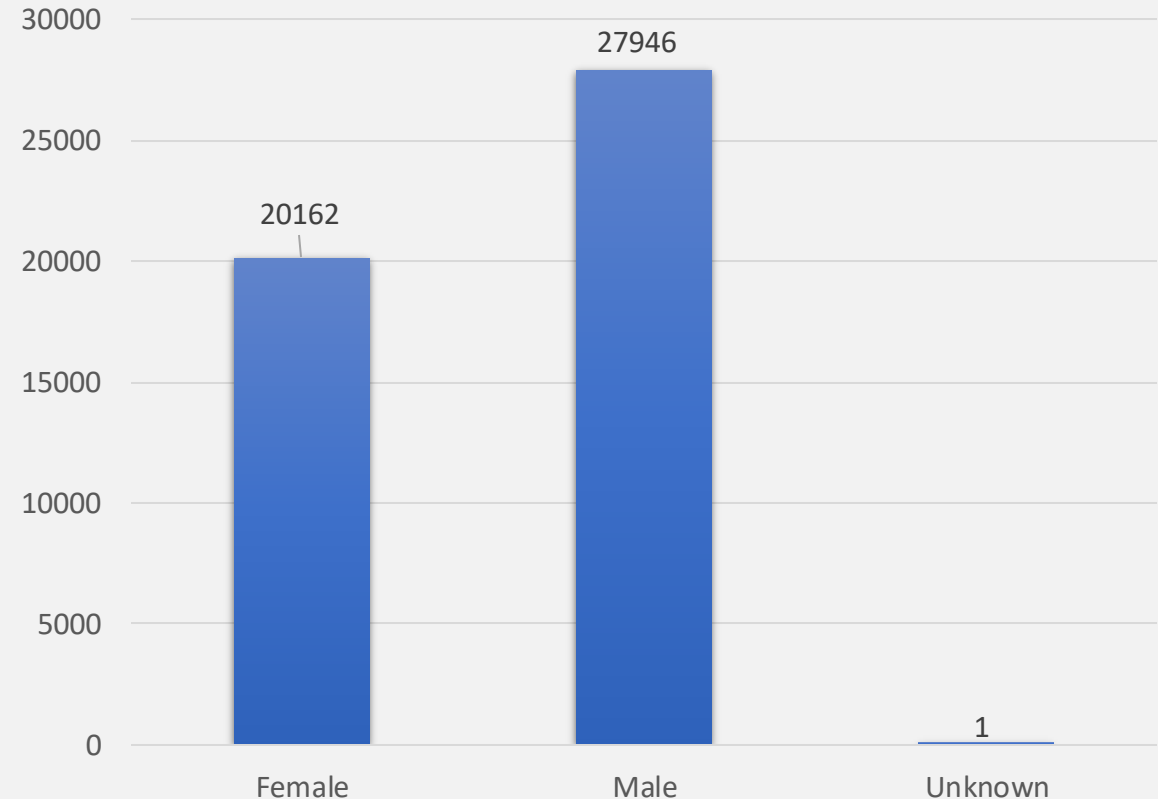
*as of April 9, 2021

COVID-19 Fatalities by Gender

Fatalities by Gender as a Percentage



Fatalities by Gender (N=48,109)



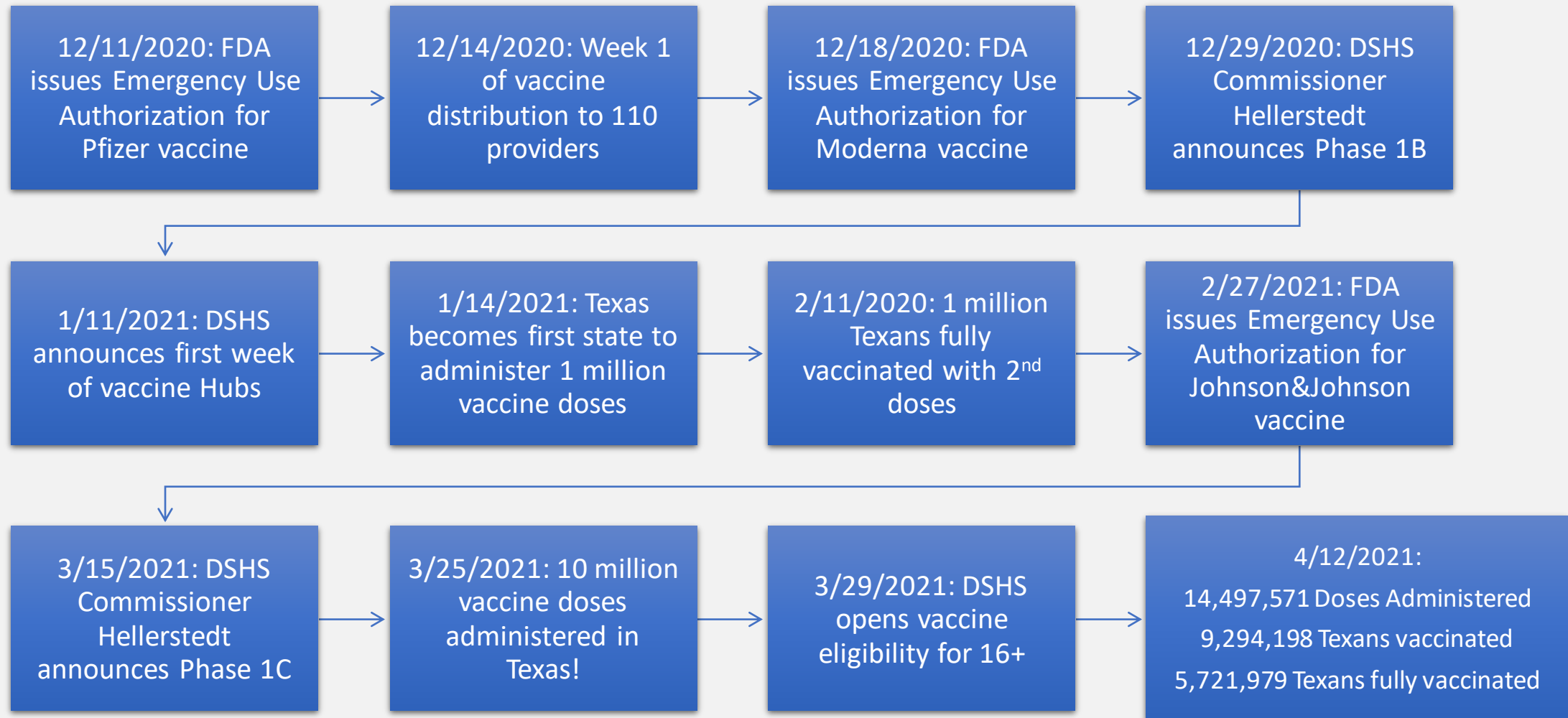
**as of April 9, 2021*

Texas COVID-19 Data Tools

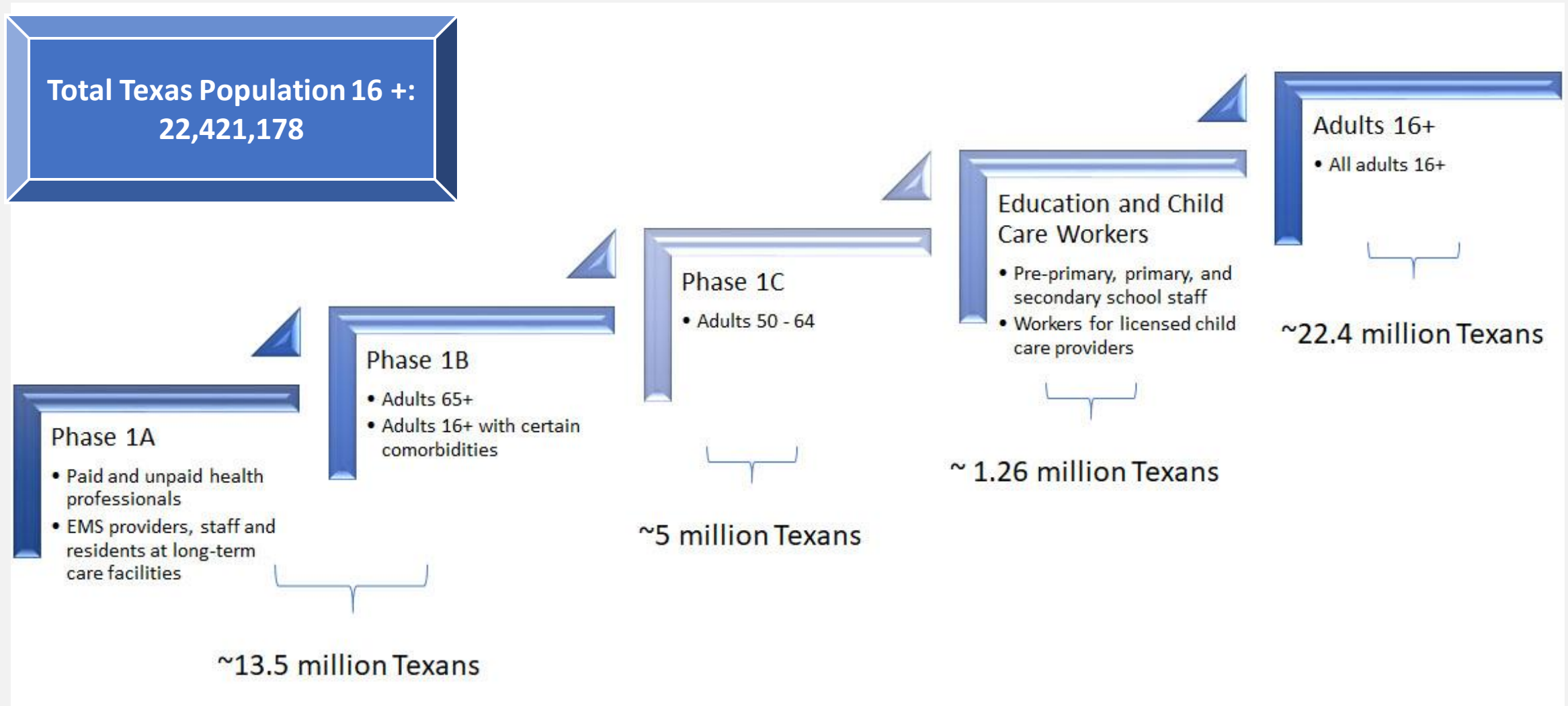
- COVID-19 Texas Case Counts
 - County by county data
 - Filters that display probable cases, estimated active, and estimated recovered cases
 - [ArcGIS Dashboards](#)
- Texas Data Vaccine Dashboard
 - Displays vaccine allocation throughout the state
 - [Workbook: COVID-19 Vaccine in Texas \(Dashboard\)](#)
- Texas COVID-19 Vaccine Availability Map
 - Displays location and information for vaccine providers
 - [Texas COVID-19 Vaccine Availability \(arcgis.com\)](#)
- COVID-19 Variants Tracker
 - <https://dshs.texas.gov/news/updates.shtm#coronavirus>



COVID-19 Vaccine Timeline



Phased Approach to Vaccine Eligibility



Research-Based Vaccine Messages

- The vaccine is key to helping our lives get back to normal.
- The vaccine protects you and those around you.
- The vaccines were tested in clinical trials with diverse races and ethnicities.
- The vaccines do not contain the COVID-19 virus.
You can't get COVID-19 from the vaccine.
- The vaccine is working and helping to keep people out of the hospital or getting seriously ill.
- Pfizer vaccine showed 95% effectiveness in clinical studies, and the Moderna vaccine 94% (*we are updating Johnson & Johnson data soon*)
- CDC and DSHS are encouraging all eligible adults to get the vaccine.
- You still need to wear a mask and social distance in public after getting the vaccine.



Current Vaccine Communication Efforts

- #EveryDoseMatters #ThisIsOurShot #HealthyTexas
 - Build vaccine confidence and uptake, especially among at-risk; vulnerable; distrustful populations
- Boosted digital buy in 70 counties with higher prevalence of vulnerable populations including same-day geofencing
- Promotion of statewide, toll-free telephone number for those without internet – referral to vaccine providers
- Showing at-risk populations getting vaccine—people need to see and hear from those who look like themselves to build trust
 - Social media influencers are important



Click
video to
watch



Click
video to
watch



Click
video to
watch

Building Vaccine Confidence

- **Pop-Up Events**

- 22 communities across Texas for boots-on-the-ground outreach and pop-up vaccine education events in popular shopping venue parking lots (start mid-April through June)

- **Large Video Wall**

- Statewide campaign messaging using medical expert clips, influencers, as well as clips of local spokespeople
- Materials will feature a QR code users can scan for localized information on vaccine issues, availability, and distribution sites



Accessing Vaccines

- Online:
 - DSHS [GetTheVaccine.dshs.Texas.gov](https://www.getthevaccine.dshs.texas.gov)
 - [Texas COVID-19 Vaccine Availability Map](#)
 - National Vaccine Finder [VaccineFinder - Find COVID-19 vaccine locations near you](#)
- By phone:
 - Toll free (833) 832-7067
 - 2-1-1 Option 6

Get Help Scheduling a COVID-19 Vaccine

Use the Texas Public Health Vaccine Scheduler
Go to [GetTheVaccine.dshs.texas.gov](https://www.getthevaccine.dshs.texas.gov) or call (833) 832-7067

How to sign up:

1. Register online at [GetTheVaccine.dshs.texas.gov](https://www.getthevaccine.dshs.texas.gov).
 - Call (833) 832-7067 if you don't have internet or need help signing up.
2. You will be notified by email or text when and where to get the vaccine.
3. If there's not an available clinic near you, you will be directed to other places to get your vaccine.

The new Texas Public Health Vaccine Scheduler helps Texans get scheduled for a COVID-19 vaccine at clinics hosted by participating Texas public health entities.



Spanish language and other translators available to help callers
Call center support available 7am-7pm, 7 days a week

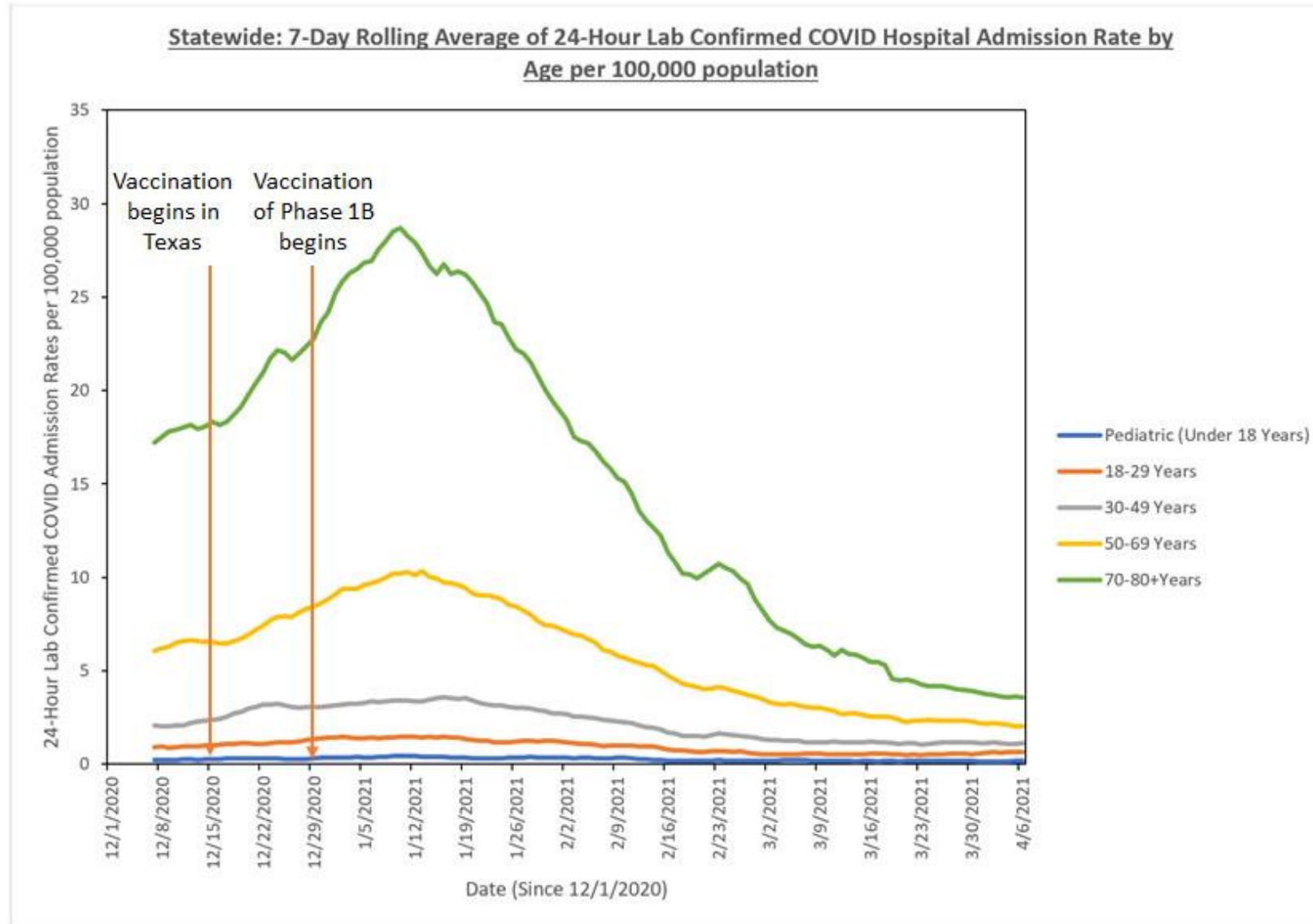
The Texas Public Health Vaccine Scheduler is not your only option for scheduling a vaccine. You can and should pursue other official COVID-19 scheduling systems. Visit [dshs.texas.gov/covidvaccine](https://www.dshs.texas.gov/covidvaccine) to learn more.

The impact of COVID-19 vaccinations on hospitalizations and fatalities in Texans



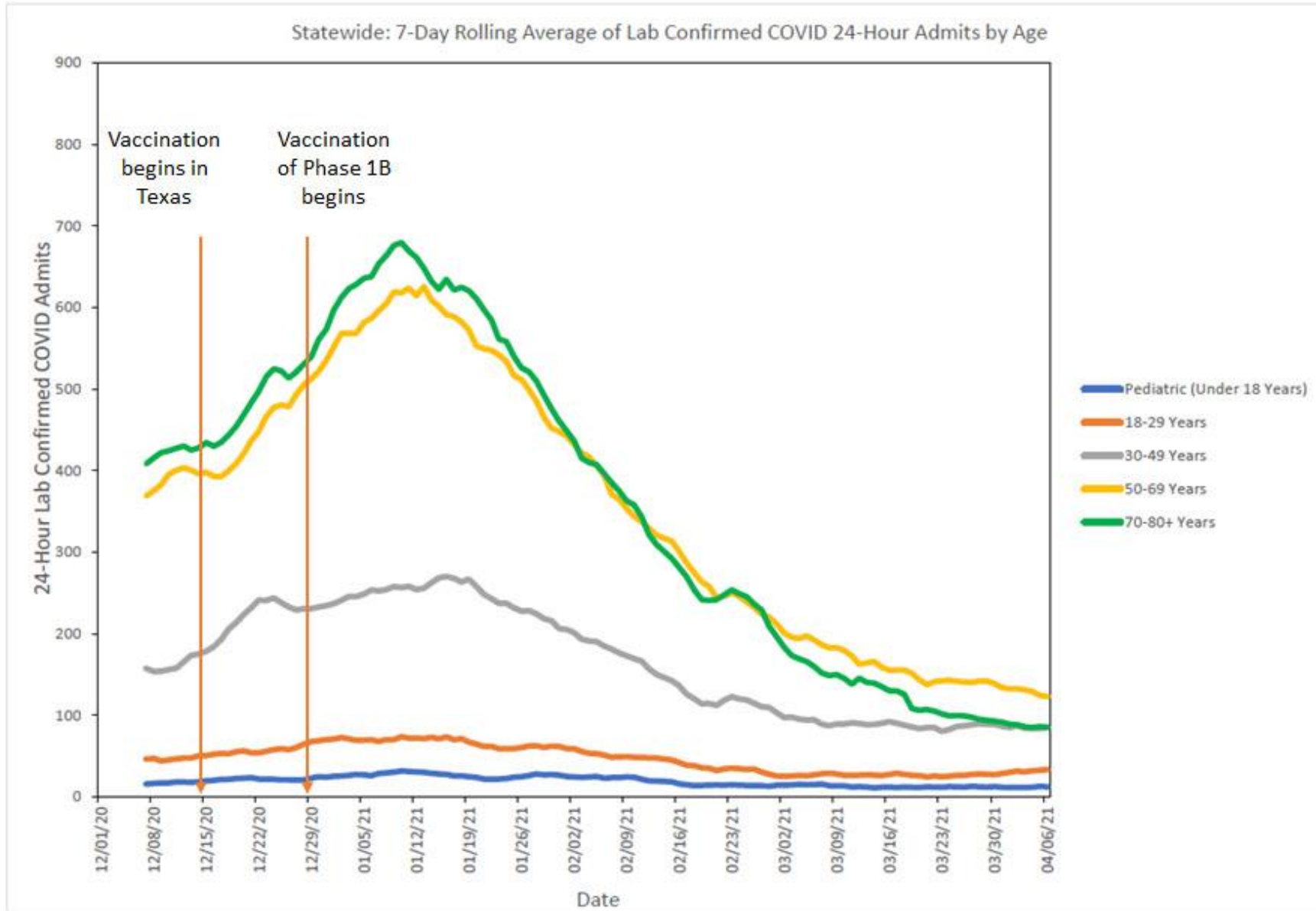
7-Day Rolling Average of 24-Hour Lab Confirmed COVID Hospital Admission Rate by Age per 100,000 population: 12/1/2020 – 4/6/2021

Statewide:

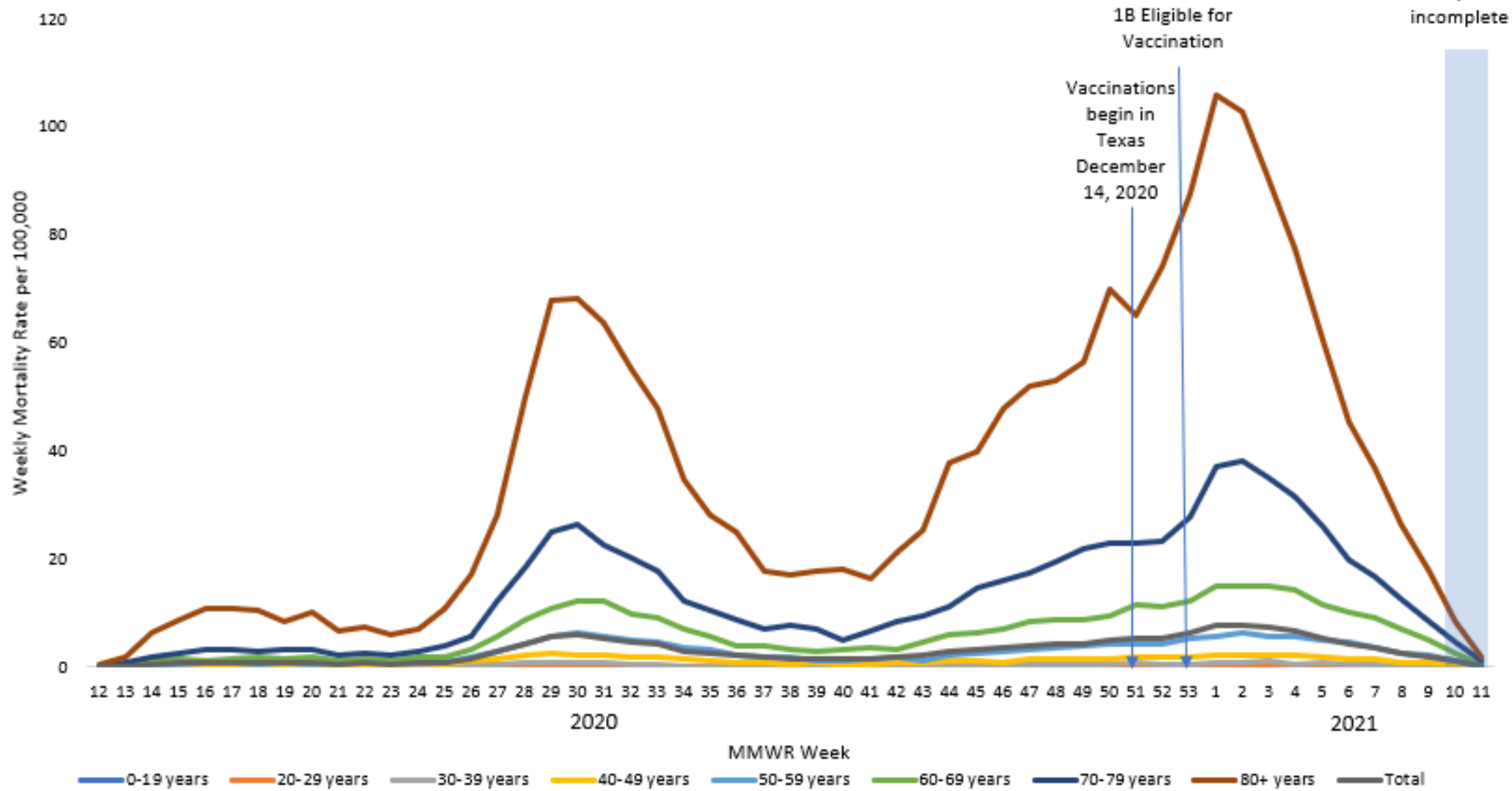


7-Day Rolling Average of Lab Confirmed COVID 24-Hour Admits by Age: 12/01/20 – 04/06/21

Statewide:



Weekly Age Specific COVID-19 Associated Mortality Rate per 100,000 Population, by Age Group and MMWR Week of Death, DSHS Vital Statistics, 2020-2021 (N=46,429)



Texas Department of State Health Services

Data Source: COVID-19 associated Fatalities, Center for Vital Statistics, Texas Department of State Health Services (DSHS) as of March 24, 2021. Data Notes: DSHS is reporting COVID-19 fatality data based on death certificates. A fatality is counted as a COVID-19 fatality when the medical certifier attests on the death certificate that COVID-19 is a cause of death. Fatalities are displayed by age group and date of death, presenting a more complete view of deaths over time. DSHS graphs reflect the date of death, and weekly totals may change as death certificates are filed or amended. By law, death certificates must be filed within 10 days of death and may be amended later. Data displayed should be treated as subject to a amendment, including date of death.

Thank you!



dshs.texas.gov/coronavirus

Follow TexasDSHS on [Twitter](#) , [Facebook](#) , [YouTube](#) and [Instagram](#) or visit www.dshs.texas.gov